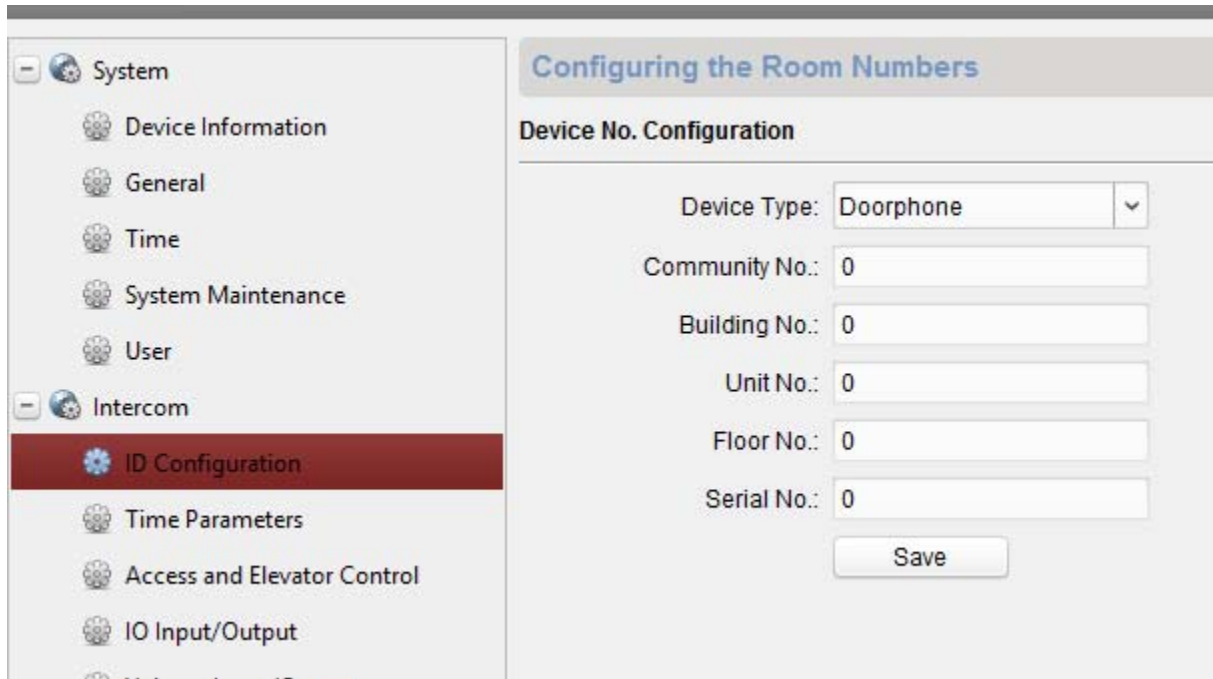


How to Set Multi Doorbell call Indoor simultaneously.

Indoor Station FW: V1.5.0_181031

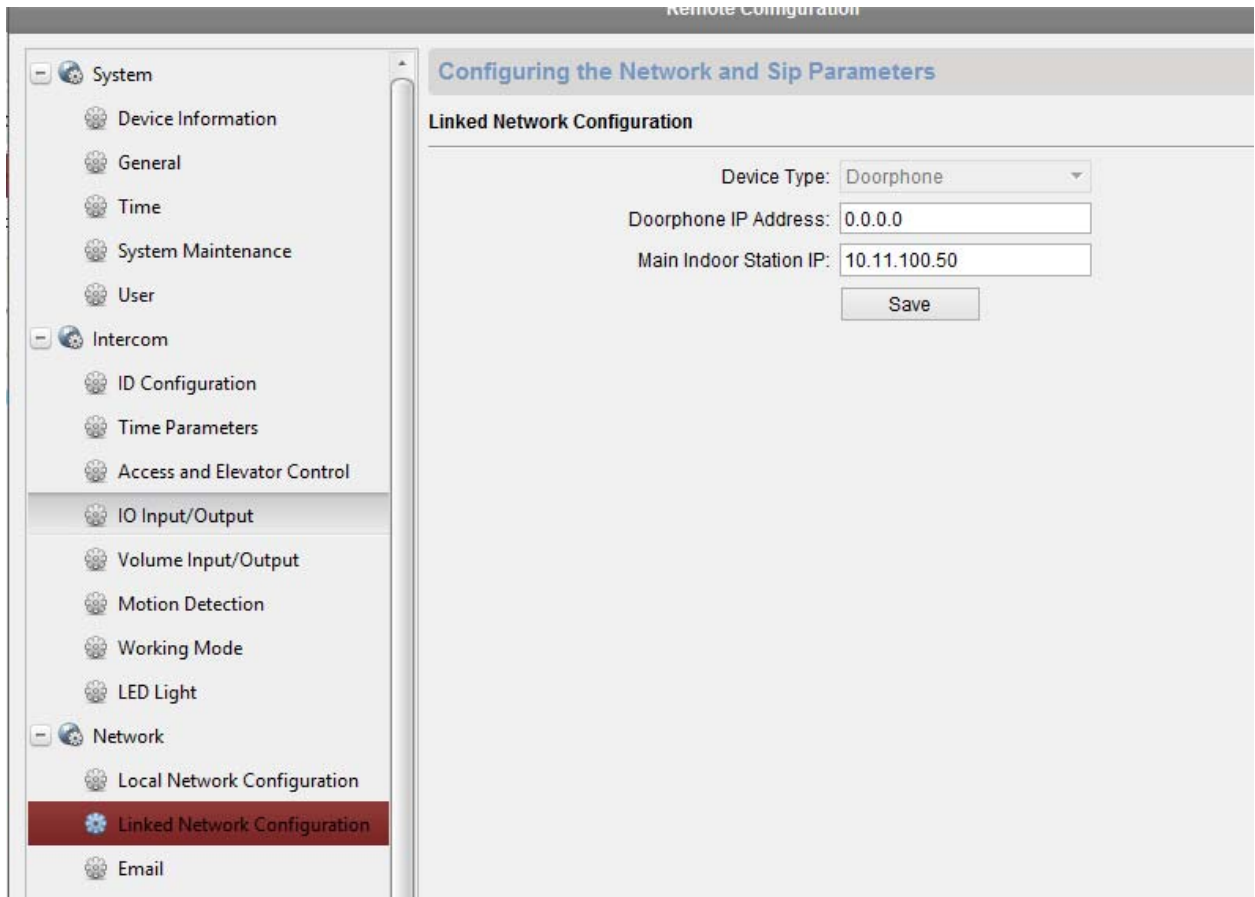
Doorbell FW: V1.4.5_180917

1. Set all Doorbell to Doorbell Device Type in VMS. **Device will reboot.**

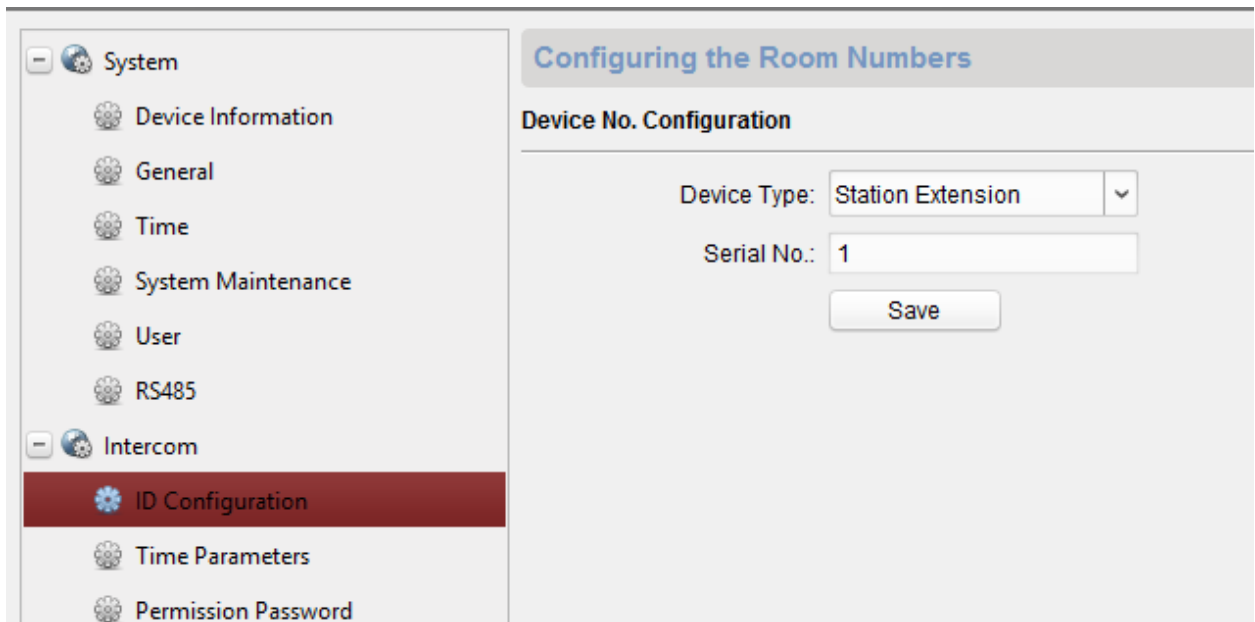


The screenshot shows a web-based configuration interface. On the left is a navigation menu with two main sections: 'System' and 'Intercom'. Under 'System', there are options for Device Information, General, Time, System Maintenance, and User. Under 'Intercom', there are options for ID Configuration (which is highlighted in red), Time Parameters, Access and Elevator Control, and IO Input/Output. The main content area is titled 'Configuring the Room Numbers' and contains a sub-section 'Device No. Configuration'. This section includes a dropdown menu for 'Device Type' set to 'Doorphone', and five text input fields for 'Community No.', 'Building No.', 'Unit No.', 'Floor No.', and 'Serial No.', all containing the number '0'. A 'Save' button is located at the bottom right of the configuration area.

2. Set all Doorbell to Link Main Indoor Station (Select one indoor station to be “Main”)



3. Set indoor station (Except one linked above) to Station Extension. (Might have to do on unit)
Device will reboot.



NOTE: For multiple indoor station, change Serial # (1, 2, 3, etc.)

4. Link indoor extensions to main indoor station (same IP step 2)

The screenshot displays a web-based configuration interface. On the left, a sidebar menu is organized into three main sections: 'System', 'Intercom', and 'Network'. The 'Network' section is expanded, and 'Linked Network Configuration' is highlighted. The main content area is titled 'Configuring the Network and Sip Parameters' and features a 'Linked Network Configuration' section. This section includes a 'Device Type' dropdown menu set to 'Station Extension', a 'Main Indoor Station IP' text input field containing the value '10.11.100.50', and a 'Save' button.